

Finding the Lift Chair that's Right for You

In 3 Easy Steps...

1. Choose the model that best fits you from **The Right Size Chart** below
2. Choose your color and fabric style from the **The Right Style Chart**
3. Order your chair by clicking on this link to the [Medical For You Store](#)

The Right Size

	4'-10" – 5'-6" Petite	5'-6" – 6'4" Standard	6'-3" and up Tall
Up to 275 lbs	1555	1155, 1255	2553T, 2555T
Up to 300 lbs	1555W		
Up to 325 lbs	5500P, 5555P	2553, 2555, 5153, 5500, 5500W, 5555	
Up to 375 lbs			
Up to 400 lbs		2553W, 2555W	

My Model Choice is _____

My Style Choice is _____

Got Questions? Let our expert staff help you!

Email – insider@medicalforyou.com

Phone – 1.877.737.9877

Web - <http://www.medicalforyou.com/default/lift-chairs.html>

The Right Style



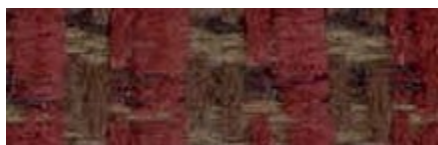
Walker Hershey (1155, 1255)



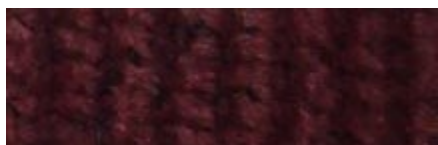
Walker Midnite (1155, 1255)



Walker Sage (1155)



Walker Vino (1155)



Aaron Berry (1555, 2555, 2553)



Aaron Hunter (1555, 2555, 2553)



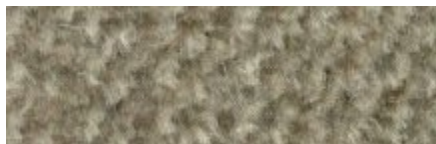
Aaron Light Brown (1555, 2555, 2553)



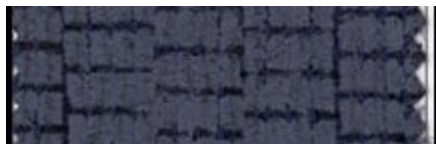
Aaron Williamsburg (1555, 2555, 2553)



Chase Blue (1555, 2555, 2553)



Chase Taupe (1555, 2555, 2553)



Encounter Blue (2553)



Encounter Mushroom (2553)



Encounter Pine (2553)



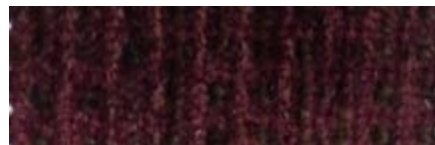
Encounter Wine (2553)



Morse Code Blue (5500)



Morse Code Praline (5500, 5555)



Morse Code Vino (5555)



Ovation Praline (5500, 5555)



Ovation Sage (5500)



Ovation Vino (5500, 5555)



Stampede Chocolate (5500, 5555)



Fairview Camel (5500)



Fairview Cashew (5555)